



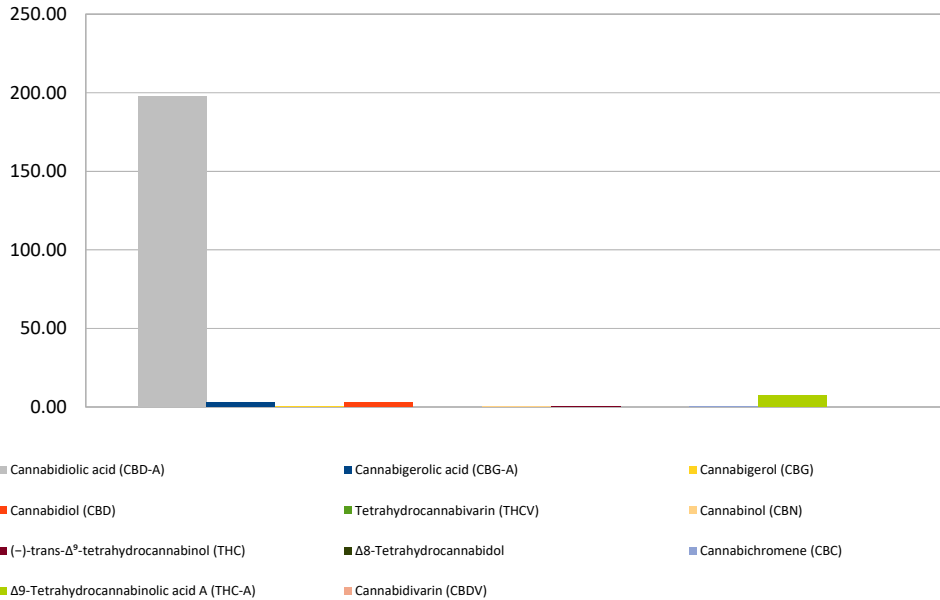
Cannabinoid Profile

Customer: CBD Plus USA
Customer Sample ID: Suver Haze
Laboratory Number: 201903-0323
Extraction Technician: DF
Analytical Chemist: GB

Extraction Date(s):	Analysis Date(s)
3/7/2019	3/7/2019

Cannabinoid (HPLC)	Results		
	LOD (mg/g)	Percent	mg/g
Cannabidiol (CBD)	<0.2		
Cannabidiolic acid (CBD-A)		19.77%	197.67
Cannabigerolic acid (CBG-A)		0.30%	3.01
Cannabigerol (CBG)		0.05%	0.49
Tetrahydrocannabivarin (THCV)	<0.2		
Cannabinol (CBN)		0.04%	0.36
(-)-trans- Δ^9 -tetrahydrocannabinol (THC)		0.04%	0.39
Δ^8 -Tetrahydrocannabinol	<0.2		
Cannabichromene (CBC)		0.04%	0.42
Δ^9 -Tetrahydrocannabinolic acid A (THC-A)		0.72%	7.18
Cannabinoids Total		Percent	mg/g
Max Active THC		0.67%	6.69
Max Active CBD		16.80%	168.01
T. Active Cannabinoids		0.42%	4.15
Total Cannabinoids		20.25%	202.53
Ratios			
26.44 CBD to THC		0.04 :1 THC to CBD	

Cannabinoid (mg/g)



Altitude Consulting, LLC utilizes NIST traceable Reference Standards and Certified Reference Material to calibrate analytical instruments along with proven analytical methods. The methods are applied in the most ethical manner following good laboratory practice guidelines. The results of this report are based solely on the sample submitted and cannot be reproduced.

This report expires 30 days after analysis date.



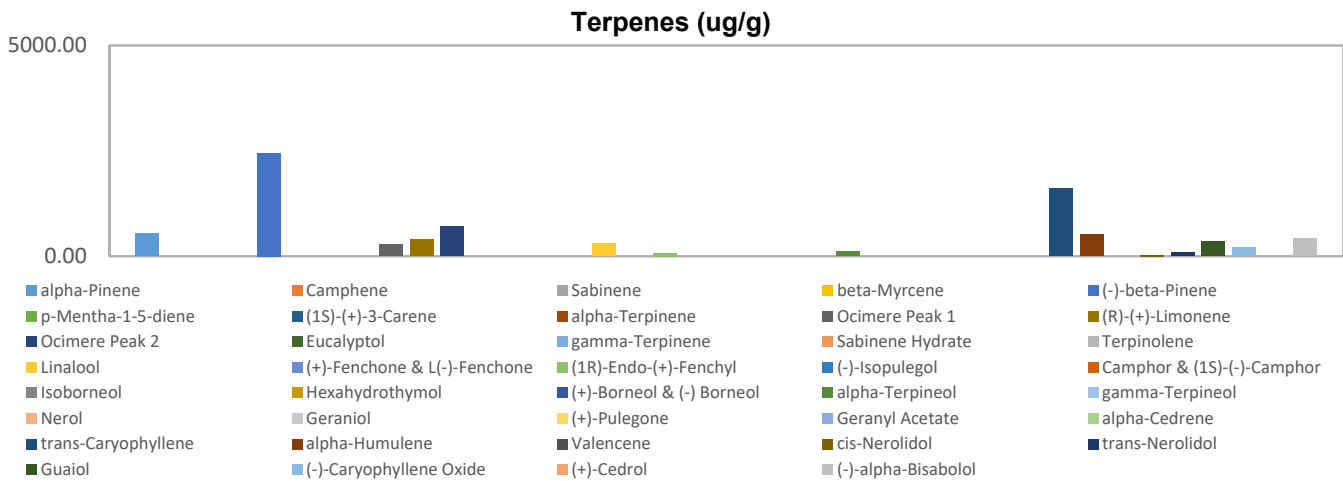
Terpenes Profile

Customer: CBD Plus USA
Customer Sample ID: Suver Haze
Laboratory Number: 201903-0323
Extraction Technician: DF
Analytical Chemist: GB

Extraction Date(s)	Analysis Date(s)
3/7/2019	3/7/2019

Terpene	Results ug/g	Terpene	Results ug/g
alpha-Pinene	530.53	Isoborneol	
Camphene		Hexahydrothymol	
Sabinene		(+)-Borneol & (-) Borneol	
beta-Myrcene		alpha-Terpineol	99.96
(-)-beta-Pinene	2446.73	gamma-Terpineol	
p-Mentha-1-5-diene		Nerol	
(1S)-(+)-3-Carene		Geraniol	
alpha-Terpinene		(+)-Pulegone	
Ocimere Peak 1	272.94	Geranyl Acetate	
(R)-(+)-Limonene	393.06	alpha-Cedrene	
Ocimere Peak 2	704.11	trans-Caryophyllene	1610.34
Eucalyptol		alpha-Humulene	515.36
gamma-Terpinene		Valencene	
Sabinene Hydrate		cis-Nerolidol	30.73
Terpinolene		trans-Nerolidol	83.20
Linalool	293.30	Guaiol	352.55
(+)-Fenchone & L(-)-Fenchone		(-)-Caryophyllene Oxide	204.11
(1R)-Endo-(+)-Fenchyl	74.62	(+)-Cedrol	
(-)-Isopulegol		(-)-alpha-Bisabolol	414.21
Camphor & (1S)-(-)-Camphor			

Empty result indicates data is less than detection limit. Reporting Limit is roughly 40 ug/g depending on amount extracted.



Altitude Consulting, LLC utilizes NIST traceable Reference Standards and Certified Reference Material to calibrate analytical instruments along with proven analytical methods. The methods are applied in the most ethical manner following good laboratory practice guidelines. The results of this report are based solely on the sample submitted and cannot be reproduced.

This report expires 30 days after analysis date.