

CERTIFICATE OF ANALYSIS

Order Type: Medical Cannabis
Order ID: OR2019-1964

Customer ID: 32
Customer Name: CBD Plus USA

Harvest/Extract Lot: GP 8031052419
Harvest/Extract Batch: None

Cultivar (Strain): 500mg Isolate
Tincture Peppermint
Sample Date: 06/13/2019

Lab ID: SA2019-6516
Date Received: 06/13/2019

Sample Matrix: Oil/Tincture
Date Completed: 06/14/2019

Remarks:

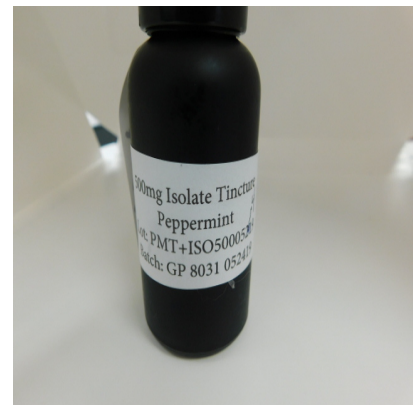
CANNABINOID (POTENCY) PROFILE

Analysis Date/Time: 06/13/2019 1930
Analyst: OL

Method: HPLC/DAD (Internal Method-001)
Instrument: Agilent 1100

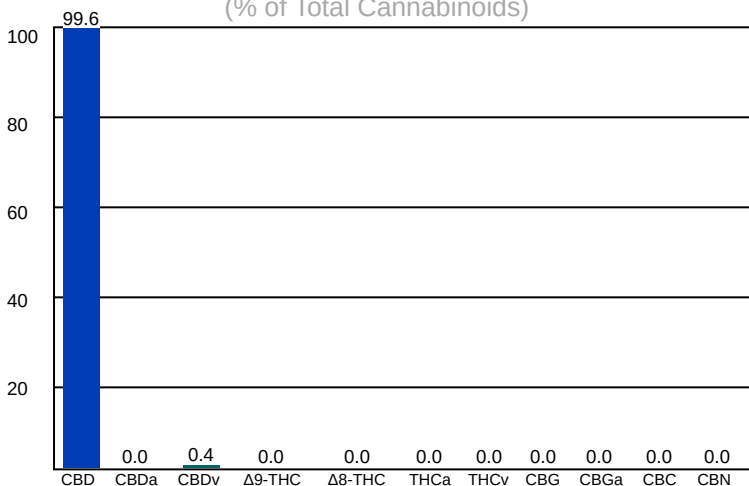
Moisture Content (%): -
Water Activity (aw): -

Cannabinoid	Result (%)	Result (mg/g)	Reporting Limit (mg/g)	Result (mg/mL)	Per Unit (mg)
CBD	1.66	16.6	0.0025	15.9	497
CBDa	-	-	0.0025	-	-
CBDv	0.00675	0.0675	0.0025	0.0648	2
Δ9-THC	-	-	0.0025	-	-
Δ8-THC	-	-	0.0025	-	-
THCa	-	-	0.0025	-	-
THCv	-	-	0.0025	-	-
CBC	-	-	0.0025	-	-
CBG	-	-	0.0025	-	-
CBGa	-	-	0.0025	-	-
CBN	-	-	0.0025	-	-



TOTAL	1.66	16.6		16	499	UNIT MASS (g): 30
TOTAL THC	-	-		-	-	"-" Not detected above RL.
TOTAL CBD	1.66	16.6		15.9	497	

Cannabinoid Distribution
(% of Total Cannabinoids)



Deviations from standard operating procedure: None

Recoveries for all analyte standards: 90-110%
Replicate Uncertainties: <5% RSD, <20% RPD
Sample/Reagent Blanks: <RL for all analytes

Values for plant matter are adjusted for moisture content.

Total THC = (THCa x 0.877) + Δ9-THC
Total CBD = (CBDa x 0.877) + CBD

Percentage results are reported by mass.
mg/g results are reported as mass component per mass material.

Abbreviations: UV - Ultraviolet, HPLC - High Pressure Liquid Chromatography, RL - Reporting Limit, RPD - Relative Percent Difference, RSD - Relative Standard Deviation

This information is provided as a service and makes no claims of efficacy and/or safety of this product. Results are applicable only for the sample(s) analyzed and for the specific analysis conducted. This report is for informational purposes only and should not be used to diagnose, treat, or prevent any medical-related symptoms.

The statements and results herein have not been approved and/or endorsed by the FDA.

REPORT OF LABORATORY ANALYSIS

This report shall not be reproduced, except in full, without the written consent of Felling Analytical Services and Technology (F.A.S.T.), LLC

Kyle W. Felling
Kyle W. Felling, Ph.D.
Laboratory Director